

Hilux

Product Specification

Hilux Gen2 COB LED Strips - 24V - 16W - 620lm - RGB+3000K - CRI90+ - 5m - IP20

Hilux Gen2 COB LED Strips - 24V - 16W - 620lm - RGB+2700K - CRI90+ - 5m - IP20

Item No.: 5714255009965(RGB + 3000K)
5714255010022(RGB+ 2700K)

Series: RGBW COB SERIES

Features

Super high density, only 4.46mm distance between same color LEDs.

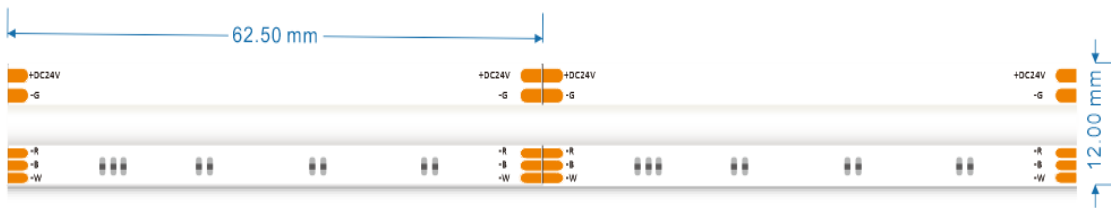
Double layer FPC, balancing the voltage dropping, heat dissipation and flexibility.

Compatible with most of the RGBW controllers in the markets.

Picture



Dimensions

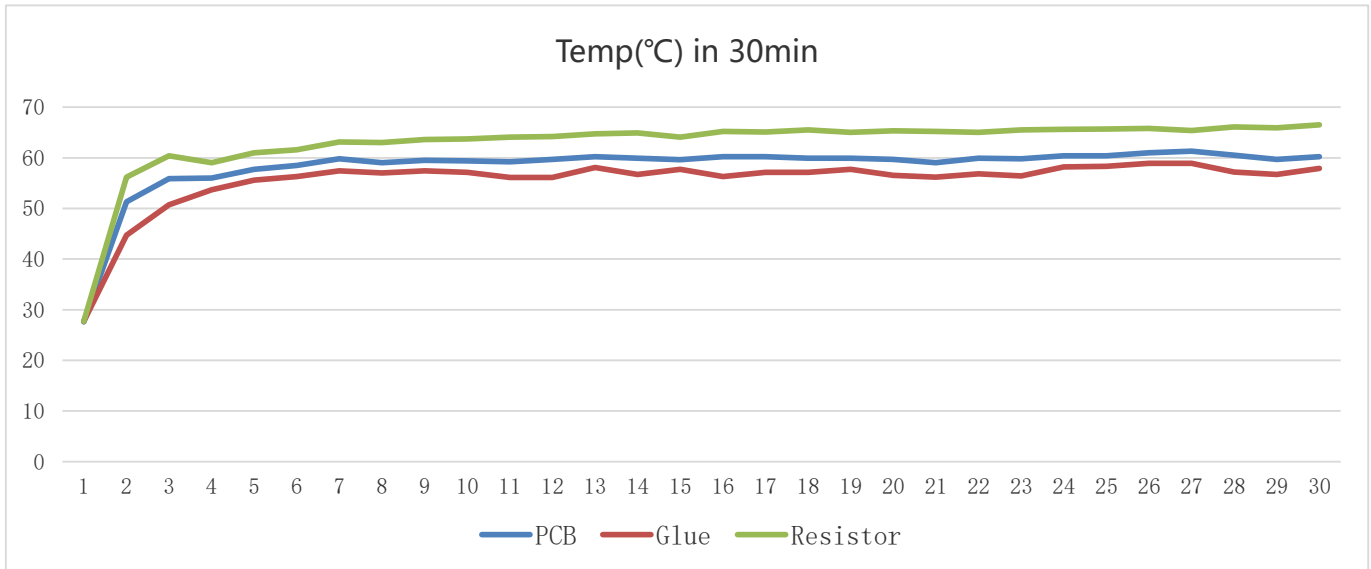


Specifications

Item NO.	5714255009965(RGB + 3000K) 5714255010022(RGB+ 2700K)			
Input Voltage	24V			
Size	W 12mm H 1.6mm L5,000mm			
Power	R	G	B	W @2700K @CRI90
W/M	4	3,5	4,5	4
Lm/W	27	106	63	65
Lm/M	108	371	283,5	260
Cutting Length	62.5mm			
Lifespan	50,000 H			
Working Temperature	-20°C - 40°C			
Storage Temperature	-20°C - 45°C			
Warranty	3 years			

* the given electrical data reflect typical values, each can vary up to 10%.

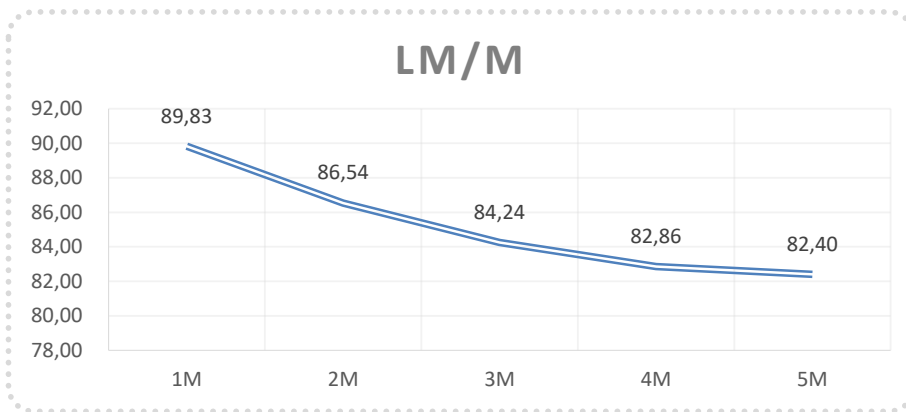
Temp. Curve



The above curves indicate the temp. changing in resistors, glue & PCB within 30 minutes after powering on, under the ambient temperature of 25 °C.

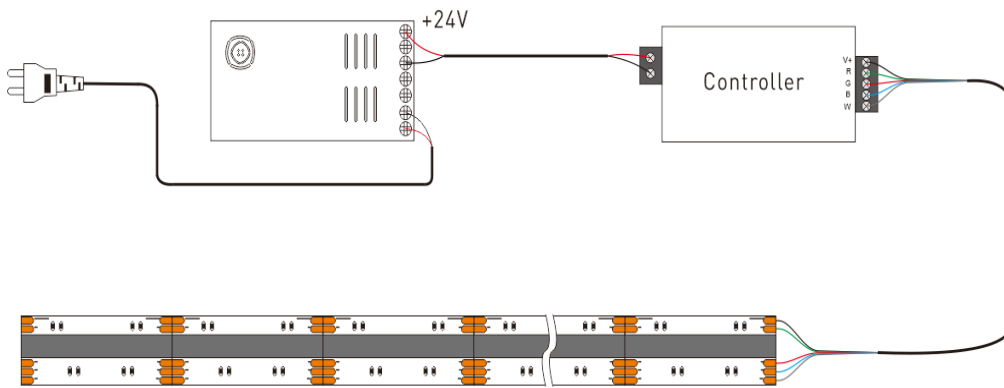
Brightness Consistency

The following charts shows the parameters on each meter based on 5M length.



From above chart, please connect 5M at most by one-end power to keep brightness consistency.

Installation Ways



- * Make sure of the total watts of COB Strip lights is less than 80% of the power supply's max output.
- * Match the polarities according to the mark ('R', 'G', 'B', 'W' and '+') in the PCB while connecting.
- * Recommend using aluminum profile or heat sink to help heat dissipation.

Applications

- * Residential lighting, decorative lighting.

